

**Are you ready to do
work that matters,
grow without limits,
and be part of an
employee-owned culture
that puts people first?**



**Join Our
Team**

Join an Employee- Owned Culture

At Erdman Anthony, you'll be part of an employee-owned culture where you will be able to collaborate freely with people at every level of the company and be treated as a peer.

What's more, you'll earn a competitive salary, receive excellent benefits, and share in the profits. Join a family atmosphere and environment where all are invested in, and proud of, the company's continued success.



Do Work That Matters

Erdman Anthony provides engineering, construction inspection and management, and survey and mapping services for projects throughout the Northeast, Atlantic, and Southeast regions. Our signature projects include accelerated bridge constructions, innovative traffic designs, million-square-foot energy-modeling projects, and large waterworks. Our projects benefit from the ideas, training, and experience each team member brings to the table.

We take pride in knowing that our work makes a difference for communities.



Grow without Limits

At Erdman Anthony, your contributions will be valued. Your decisions will be respected, and you will find numerous opportunities to keep growing.

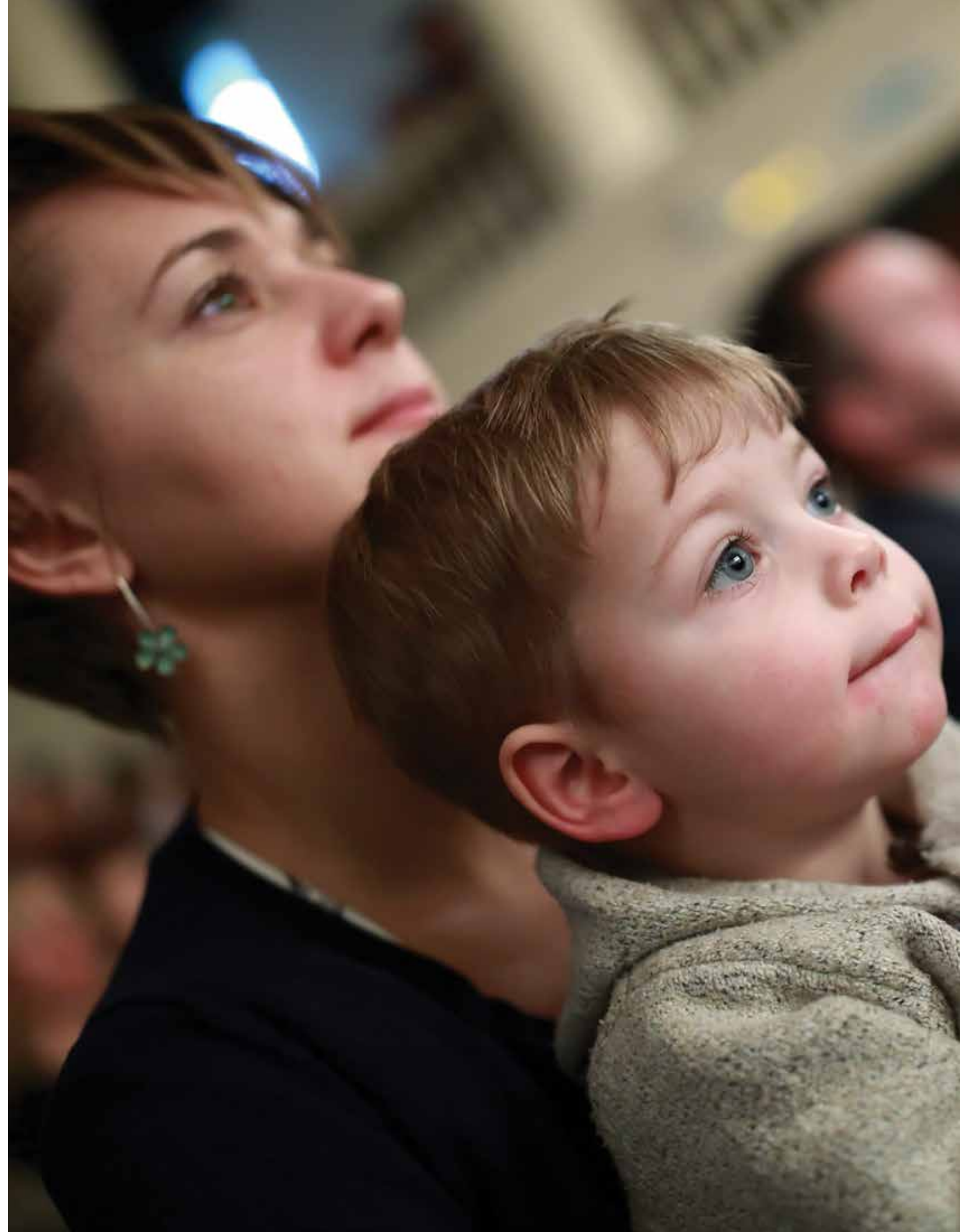
Individual career advancement is supported through our comprehensive program of continuing education, which also supports your pursuit of registrations and certifications, honing your technical skills, or developing your interpersonal skills. We are committed to supporting you each step of the way.



Find Flexibility & Support

Be someplace where you are treated as the professional you are. We understand the importance of a healthy work-life balance, so **we provide a range of family-friendly policies to give employees the flexibility to manage their lives outside the office.**

We also understand that you need to think about how your own values align with the company values; we value hard work that is fulfilling, and we encourage an atmosphere of support inside and outside the office.



Find Community

At all of our offices, everyone makes time to brainstorm and help each other; it's not uncommon for engineers just out of school to be collaborating with senior managers. We work together, but we are friends, too.

Our collaborative work environment is reinforced by activities like Cereal Day, Bike-to-Work Day, softball, and picnics.

That kind of rapport makes for a happy and healthy work community, and our clients notice!



Bridges & Highways

Moving people and goods safely and efficiently

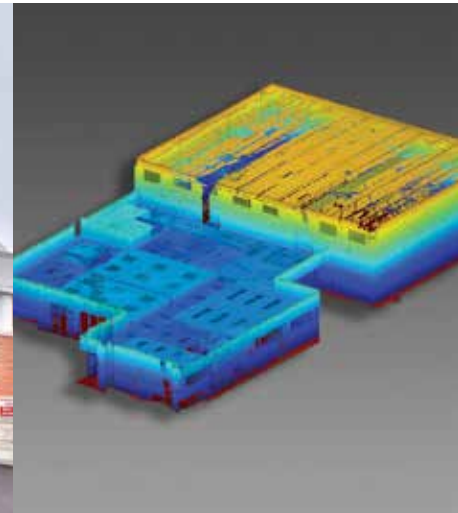
- *Innovating diverging-diamond interchanges*
- *Designing new bridges to span gorges and rivers*
- *Rehabbing structures to serve for another generation*
- *Transforming major thoroughfares*
- *Survey and mapping to provide accurate documentation*
- *Construction inspection and management services to confirm project goals are met*



Commercial/Site Development & Municipalities

Providing land development/site-engineering services to commercial, industrial, and institutional clients, plus infrastructure solutions for communities

- *Wildlife surveys and relocations for species protection*
- *Laser scanning and modeling, from historic landmarks to container-port cranes*
- *Mechanical, electrical, and plumbing design*
- *User-accessibility considerations*
- *Commissioning for retail and industrial applications*
- *Survey and mapping for site development*

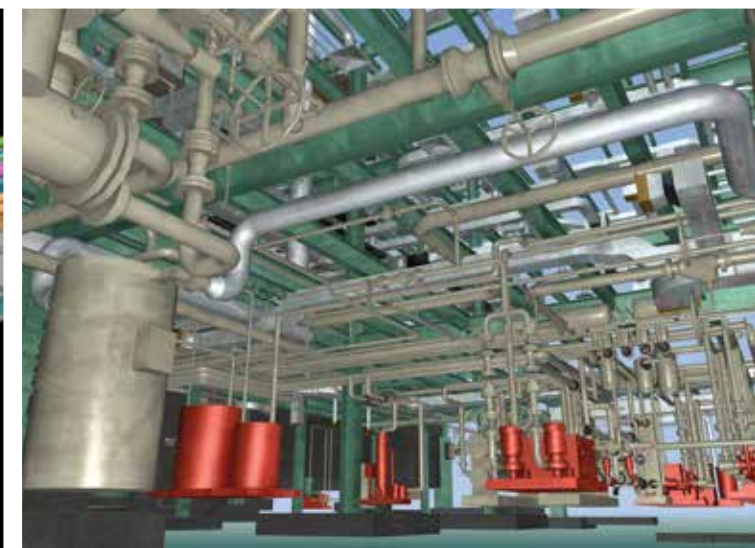
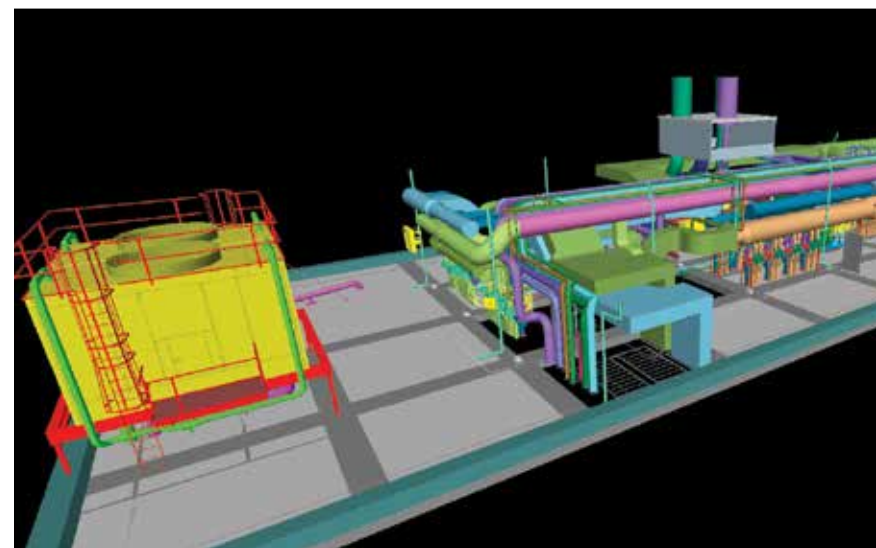


Energy & Education

Contributing engineering and design for exceptional learning, teaching, living, and working environments

- *Utility-infrastructure design for state-of-the-art campuses*
- *Innovative solutions for ambitious renovations*
- *Leading with environmentally conscious solutions*

Erdman Anthony's experienced professionals develop solutions for longevity, efficiency, and sensitivity to health and environmental impacts.



Industrial & Rail

Renovating and managing industrial facilities, with a commitment to performance, schedule, sustainability, and energy efficiency

- *Power plants*
- *High-tech labs*
- *Agricultural facilities*
- *Rail tracks, bridges, stations, and platforms*



Parks & Recreation

Integrating the built environment into natural settings while recognizing the importance of sustainability and aesthetics

- *Stream-restoration design, permitted by the State DEC and the U.S. Army Corps of Engineers*
- *Site, infrastructure, and structural design improvements*
- *Multiuse trails that address issues related to conservation, recreation, and safety*
- *Creative land redevelopment*



Health Care & Retail

Providing facilities engineering and design services for new buildings and extensive renovations for places where people are put first

- *Critical energy analysis for surgical centers*
- *Environments for all stages of patient care*
- *Medical research and life sciences*
- *Malls, pharmacies, restaurants, and auto dealerships*



Food Markets

Upgrading food-related facilities—from stores and restaurants to commercial kitchens and distribution centers—for improved operations and superior customer service

- *Food market-specific engineering and design*
- *New facilities and remodels of all sizes*
- *Energy modeling for lower life-cycle and energy costs*
- *Mechanical, electrical, plumbing, and refrigeration engineering*



Water/Sewer & Private Utilities

Supporting the entire water cycle and keeping communities powered up

- *Complex water and sewer conveyances*
- *Sophisticated spillway design*
- *Major valve overhauls*
- *Replacing mains to last for another generation*
- *King-tide solutions*
- *Electrical power and distribution*
- *Telecommunications networks*
- *Solar development*
- *Timely regulatory approvals*
- *Survey and mapping to provide accurate documentation*



Build Your Career

What does it take to make the world a better place?

We believe it takes a community — the kind you'll find at Erdman Anthony, where people are respected, supported, and empowered to do the best work of their lives.

The result?

Decade after decade of great projects enhancing communities across the eastern U.S. — and an outstanding place to build your career.



Your Benefits

- Medical insurance
- Health savings account (HSA)
- Dental insurance
- Vision-care insurance
- Life and AD&D insurance company-paid
- Supplemental life-insurance options
- 401(k), with a generous company match
- Paid vacation/holidays/sick/personal time
- Short-term disability company-paid
- Long-term disability options
- Flexible spending plan for dependent care
- Tuition reimbursement
- Employee assistance program for employees and their family members company-paid

Erdman Anthony is an Equal Opportunity Employer.



Want to know more?

Visit erdmananthony.com.



Ready to start?
Find out More and See Where You Fit in at erdmananthony.com/careers



The Community That Builds Communities



erdmananthony.com/careers



ERDMAN ANTHONY, YOUR RESOURCE FOR SUSTAINABLE INFRASTRUCTURE SOLUTIONS

Erdman Anthony's approach to sustainable design benefits our clients, company, and communities.

NORTHEAST

ALBANY
BUFFALO
ROCHESTER

ATLANTIC

HARRISBURG
PITTSBURGH
COLUMBIA
LEESBURG

SOUTHEAST

WEST PALM BEACH

TRANSPORTATION

Engineering

GEOSPATIAL

Survey and
Mapping Services

CIVIL

Engineering

FACILITIES

Engineering and
Design Services

CONSTRUCTION

Inspection and
Management Services